

KENTUCKY'S U.S. 23

# COUNTRY MUSIC HIGHWAY TRAVEL GUIDE

FREE

FEATURING

COUNTRY MUSIC HIGHWAY

**ROAD**  **TO FAME**

WHO WILL BE THE  
NEXT COUNTRY  
MUSIC HIGHWAY  
STAR?

READ ALL ABOUT THE STARS  
FROM THE HIGHWAY!

FIND OUT WHERE TO EAT, PLAY AND BE ENTERTAINED  
ALONG THE COUNTRY MUSIC HIGHWAY!

[WWW.CMHRoadToFame.com](http://WWW.CMHRoadToFame.com)

[WWW.COUNTRYMUSICHIGHWAY.com](http://WWW.COUNTRYMUSICHIGHWAY.com)



# HUNTINGTON

West Virginia

There's only one thing missing!



There's so much to see and do in Cabell County. Whether it's nightly or weekly, we can connect you with great places to stay, unique restaurants, cool shopping, fun things to do and interesting places to visit.



Stop by or call our office for a FREE Visitor's Guide



1-800-635-6329 | 304-525-7333  
www.wvvisit.org

Above: Heritage Farm Village • Camden Park • Blenko Glass • Ritter Park • Hillbilly Hotdogs



U.S. 23 Country Music Highway Travel Guide  
is published and distributed by  
**Goodytime Productions, Inc.**  
For questions or comments, contact Goodytime Productions  
1-888-790-2365  
ken@goodytime.com  
www.countrymusichighway.com

**Goodytime Productions**  
PO Box 1597  
Prestonsburg, KY 41653  
Owners: Ken & Angie Carriere

Graphic Design & Layout - Angie Carriere  
Map Design - Angela Grace Photography  
Contributing Writers - Staci Carriere, Ken Carriere, and various sources  
Photography - Angie Carriere [www.AngelaGracePhotography.com](http://www.AngelaGracePhotography.com), Ken Carriere, Joshua Carriere, Jo Harvey and various sources

## What You ll Find I

Greater Huntington.....	2
Welcome to Kentucky's Country Music Hwy.....	4
Johnson County's Agricultural Hot Spots.....	5
Butcher Holler.....	6
Mountain HomePlace.....	6
Country Music Highway Museum.....	7
Ashland - "Small Town with Big Fun".....	8
Ashland Attractions, Festivals, & Events.....	9
Prestonsburg, Star City of Eastern Kentucky.....	10
Jenny Wiley Theatre.....	11
Pike County Tourism.....	12,13
Morehead Conference Center.....	14
Morehead and Rowan County.....	15
Grayson Kentucky Tourism.....	16
Mt. Sterling Tourism.....	16
World Chicken Festival.....	16
London-Laurel County Tourism.....	17
Lawrence County Tourism.....	18,19
Letcher County Tourism.....	20,21
Stars of the Country Music Highway.....	22,23
Country Music Highway Road to Fame.....	24
PCG Nashville.....	26
Staci Carriere.....	27
Historic Downtown Paintsville.....	27
Billy Jean Osborne's Kentucky Opry.....	28
Breaks Interstate Park.....	29
Adventure Tourism.....	30
Morehead State University.....	31
StoneCrest Golf Course.....	32
Paintsville Golf Course.....	32
Raven Rock Golf Course.....	32
David Appalachian Crafts.....	33
Courthouse Cafe & Cozy Corner.....	33
Pine Mountain Grill.....	34
The Perfect Setting.....	34
Pig in a Poke.....	34
Lizzy B's Cafe & Bakery.....	35
Wilma's Restaurant.....	35
Billy Ray's Restaurant.....	35
Cloud 9 Restaurant.....	35
East Kentucky Expo Center.....	36
Paramount Arts Center.....	36
Heritage House.....	36
Comfort Suites.....	37
Hampton Inn.....	37
All Good Things.....	38
Fairs and Festivals.....	38
Crooked Road.....	38
Country Music Highway Map.....	39
Paintsville Tourism.....	40





## Welcome to Kentucky's U.S. 23 Country Music Highway

On March 1, 1994, an historic bill sponsored by State Representative Hubert Collins was passed and little-known U.S. Route 23 Highway in eastern Kentucky became the "Country Music Highway." This was done to recognize all the well-known country music stars that came from this region. Only eight years later and with the vision and perseverance of Congressman Hal Rogers, the Country Music Highway was recognized as a National Scenic Byway in June 2002. This 144-mile stretch of highway runs north and south along the eastern part of the state of Kentucky and covers seven counties.

The musical talent that has developed from these Appalachian hills includes Loretta Lynn, Wynonna & Naomi Judd, Billy Ray Cyrus, Tom T. Hall, Ricky Skaggs, Keith Whitley, Dwight Yoakam, Gary Stewart, Patty Loveless, Crystal Gayle and more. Visitors to this area will quickly realize that this entire region is steeped in cultural and musical history.

There are many opportunities to hear the sounds of all types of music at the many venues along the Country Music Highway. In addition to the many venues, there are countless shows and festivals that feature the sounds and talents of the region.

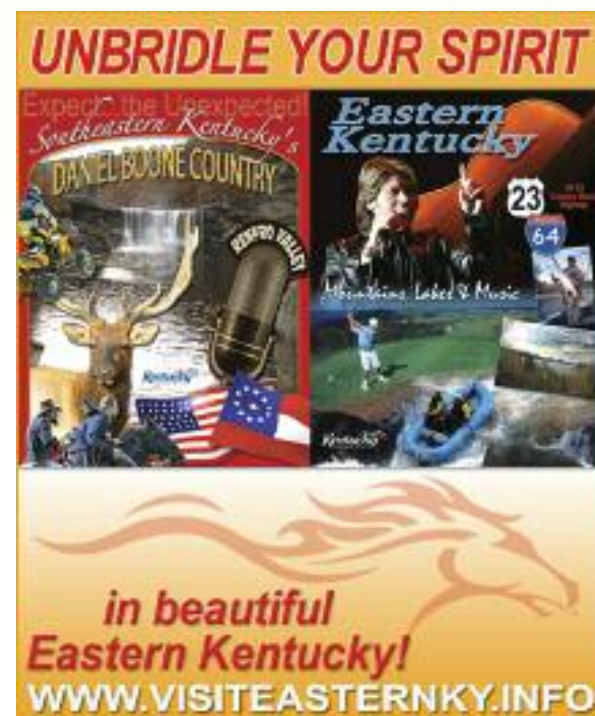
The Country Music Highway is not only about country music. When you travel the Country Music Highway you can also learn about Native Americans, pioneers, the Civil War, and the coal mining industry. The story of eastern Kentucky has been influenced by those who, early on in the nation's history, began searching for land west of the Appalachian Mountains. Not long thereafter, as a result of being a border state between the North and South, sections of the area became battlegrounds for the Civil War.

As the area began to develop and grow, coal mining became an essential chapter in Kentucky, and still is. This area is well known for a very notable feud *The Hatfield-McCoy Feud*, which became a nationally-known event. The two families have recently formed a working relationship and have collectively developed the *Hatfield-McCoy Reunion* on the second weekend of

June in Pike County.

While on the trail of feuders, pioneers, or miners, the area along the Country Music Highway is full of natural beauty and recreational opportunities. The region is blessed with six beautiful state parks from *Greenbo State Resort Park* in Greenup County to *Kingdom Come State Park* in Letcher County. *Jenny Wiley State Resort Park* in Floyd County also features Broadway-type musicals at *Jenny Wiley Theatre*.

Welcome to one of the most beautiful and historic places in the nation. As you travel along the Country Music Highway and meet the friendly folks of this Appalachian region, you will quickly realize that you have found a hidden treasure. We know that you will enjoy the music and crafts that abound here. The key to a successful visit in this region is to make sure you have enough time to see and hear it all!



### Johnson County's AGRICULTURAL Hot Spots!

1. Farmer's Market: Paintsville, signature event - Taste of Kentucky Food Show
2. Mountain HomePlace: Staffordsville, signature event - Heritage Days
3. Paintsville Lake: Staffordsville, signature event - Annual Fishing Tournament
4. Oil Springs Cultural Arts and Recreation Center: Oil Springs, signature event - Festival of Artists featuring "Artfully Delicious"
5. Holy Mountain Farm: Red Bush (USDA certified organic), signature event, A "Mazing" Agriculture
6. Davis Farm: Stambaugh, signature event - Beefin' it Up
7. Black Barn Produce: Wittensville, signature event - Summer Jammin' - jams and jellies from home grown berries, plus live music
8. River Community Center: River (Jenny Wiley Grave Site), signature event - Heritage Trails
9. Johnson County Extension Office: Paintsville, signature event - 4-H Apple Dipping
10. Stafford House: Paintsville, signature event - Timber Times (wreath making, wooden art, heritage tours)

For more information contact the Johnson County Extension Office 606-789-8108 or Paintsville Tourism 606-297-1469

[www.JohnsonExtension.com](http://www.JohnsonExtension.com) [www.VisitPaintsvilleKy.com](http://www.VisitPaintsvilleKy.com)

\*Events and activities are subject to change. Please contact Paintsville Tourism or the Extension Office before planning a tour.  
\*\* Map items are approximate, not exact. Please contact the Extension Office or Paintsville Tourism for driving directions.





Butcher Hollow is in Johnson County and home of the world's most famous coal miner's daughter, Loretta Lynn. Her birthplace and family home is nestled between two fog shrouded mountains up a "holler" just two miles south-east of the coal mining camp of Van Lear.

For more information call Webb's General Store at (606) 789-3397.

## The Mountain HomePlace... where history comes alive.

The Mountain HomePlace opened in July 1995, with five original 19th and 20th century structures - all of which came from the surrounding area - making up the core of the farmstead. It is located on Paintsville Lake, just west of Paintsville.

The buildings consist of a family cabin which is a double pen cabin, a double crib barn, a one room schoolhouse, and the old Fishtap United Baptist Church.

Interpreters in authentic period costumes perform daily chores on the farm April thru October.

The farm offers families and groups unique experiences from touring the grounds, to having an old-fashioned wedding at the church. Visitors can also enjoy a concert at the newly constructed "In the Pines" amphitheater. There are always things to see and do at the HomePlace.

606-297-1469

Kentucky  
UNBRIDLED SPIRIT

## Country Music Highway Museum

U.S. 23 is a designated National Scenic Byway, honoring country music entertainers who were born or lived along Route 23. The U.S. 23 Country Music Highway Museum in Paintsville offers fans an opportunity to see displays created to honor many of the country music entertainers who consider U.S.23 their home.

Visit displays from Billy Ray Cyrus, Miley Cyrus, The Judds, Tom T. Hall, Ricky Skaggs, Hylo Brown, Loretta Lynn, Crystal Gayle, Rebecca Lynn Howard, Keith Whitley, Dwight Yoakam, Patty Loveless, and Gary Stewart.

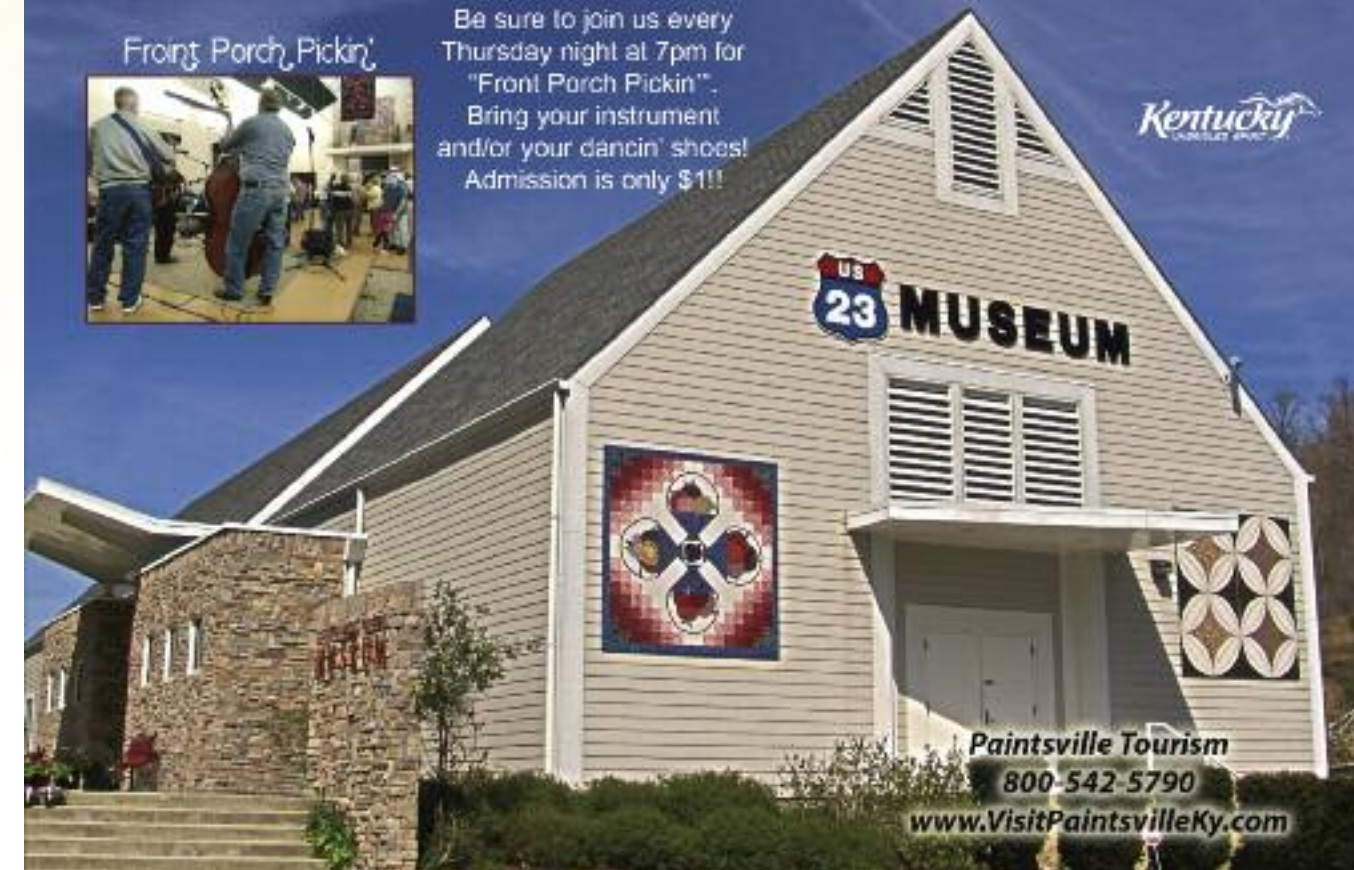
The museum also has a unique gift shop that is filled with items supplied directly from the various entertainers. There are also items by local Appalachian crafters and artists that reflect the culture of U.S. 23.

### Front Porch Pickin'



Be sure to join us every Thursday night at 7pm for "Front Porch Pickin'". Bring your instrument and/or your dancin' shoes! Admission is only \$1!!

Kentucky  
UNBRIDLED SPIRIT



Paintsville Tourism

800-542-5790

[www.VisitPaintsvilleKy.com](http://www.VisitPaintsvilleKy.com)





# Ashland

“Small Town With Big Fun”

The main street serving Ashland, “Winchester Avenue,” is home to many arts venues including the historic Paramount Arts Center. The Paramount hosts the Kentucky Music Trail, the Youth Education Series, *A Broadway Series*, and many other wonderful cultural programs and concerts. During the Thanksgiving season, the theatre is transformed into a holiday extravaganza entitled “Festival of Trees,” which has been named one of the top ten Kentucky winter events by the Kentucky Travel Industry Association.

While visiting Ashland, don’t miss the Frame Up Gallery, Central Park, The Highlands Museum & Discovery Center (home to the Country Music Museum), the Upstairs Gallery, Quilt Trail, Floodwall murals, and the Pendleton Art Center (working artisans).



A visit to Ashland would not be complete without stopping by the Jesse Stuart Foundation and Bookstore which includes a wonderful gift shop showcasing Kentucky products.

The city is has recently opened the first phase of the new riverfront development. Already in place are beautiful floodwall murals featuring the first quilt block to be painted on a floodwall in the United States. Catlettsburg, Kentucky also has gorgeous floodwall murals and a historic courthouse and many other beautiful buildings.



During the other seasons, visitors can enjoy many other family festivals including the Redbud Festival, Summer Motion, Poage Landing Days, Catlettsburg Labor Day Celebration, the Boyd County Fair, Chili Fest and Youth Fest.

The newly established Ashland-Boyd County Quilt Alley currently has nine blocks on display and is planning to add numerous blocks in the near future. Ashland is rapidly becoming a quilt destination.

Come and enjoy Country Music Highway 23 - you’ll hear lots of great music while enjoying our life and culture. The third annual U.S. 23 Yard Sale is scheduled for the last weekend in May. Small Town – Big Fun!



Area Attractions	Festivals & Events
<b>Ashland Main Street</b> 1645 Winchester Avenue, 506-325-7892 <b>Paramount Arts Center</b> 1300 Winchester Avenue, 506-324-3175 <b>Pendleton Art Center</b> 1517 Winchester Ave. 506-920-9963 <b>Classic Antique Car Museum</b> U.S. 60 W. 606-929-9000 <b>Highlands Museum &amp; Discovery Center</b> 1620 Winchester Avenue, 506-325-8888 <b>Jesse Stuart Foundation</b> 1645 Winchester Avenue, 506-325-1617 <b>City of Catlettsburg Historic Courthouse and Floodwall Murals</b> 26th & Broadway Street, 908-739-5223 <b>Ashland Central Park</b> 11th & Central Avenue, 506-327-2946 <b>Ashland Floodwall Murals</b> Riverfront, 506-329-1007 <b>Ashland Tennis Center</b> 1300 Oakview Road, 606-329-3246 <b>Wellen Woods Pioneer Village</b> 939 Bots Fork Road, 506-918-6975 <b>Ashland Historical Walking Tour</b> Downtown Ashland, 506-325-1007 <b>KYOWA Mall</b> 10679 U.S. Rt. 60, 606-928-3833 <b>Ashland Town Center Mall</b> 500 Winchester Ave, 606-324-1100 <b>Catlettsburg Antique Mall</b> 2806 Louisa St. - Catlettsburg 606-739-9786 <b>Diamond Links Golf Club</b> St. Rt. 1 - Catlettsburg 606-918-5333 <b>Sandy Creek Golf Course</b> 9701 Meads Springer Rd. Meads 606-329-9093 <b>Bar W Barbe</b> Meads Springer Rd. Meads <b>ABC Quilt Alley</b> Ashland/Boyd County <b>First Fridays Art Walk</b> Downtown Ashland, Monthly	<b>Black History Month</b> Highlands Museum & Discovery Center, February <b>Easter Egg Hunt</b> , Ashland Central Park, April <b>Red Bud Festival</b> , April <b>Derby Derby</b> , Ashland Central Park, May <b>US 23 Country Music Highway Yard Sale</b> , May <b>Memorial Day Picnic in the Park</b> , Ashland Central Park, May <b>Annual Brats Road Festival</b> Ashland Central Park, June <b>ARP Bluegrass Junior Golf Tournament</b> Bellevue Country Club, June <b>Kentucky Music Trail</b> , June - August <b>Summer Motion</b> Central Park/Riverfront, July <b>Independence Day Parade</b> Downtown Ashland, July <b>Patriotic Fireworks Display</b> , Riverfront, July <b>Boyd County Fair</b> Boyd County Fairgrounds, August <b>US 23 Road Rally</b> Greenup Co. to Leach Co., August <b>Catlettsburg's Labor Day Celebration</b> Downtown Catlettsburg, Labor Day Weekend <b>Labor Day Fest</b> Ashland Central Park, Labor Day Weekend <b>Poage Landing Days</b> Downtown Ashland, September <b>Barker K. Washington Festival</b> Downtown Ashland, September <b>Chili Fest</b> , Paramount Arts Center, October <b>Halloween Festival</b> , Ashland Central Park, October <b>Dining with the Past</b> Highlands Museum & Discovery Center, October <b>Winter Wonderland of Lights</b> Central Park, November - January <b>Festival of Trees</b> Paramount Arts Center, November <b>Holidays at the Highlands</b> Highlands Museum & Discovery Center, December <b>New Year's Eve Celebration on the Plaza</b> Judd Plaza - December

1509 Winchester Ave., Ashland, KY • 41101  
606-329-1007 • 800-377-6248  
e-mail: [aaevb@visitashlandky.com](mailto:aaevb@visitashlandky.com)  
[www.visitashlandky.com](http://www.visitashlandky.com)





## Prestonsburg > the star city of eastern Kentucky

Join Prestonsburg for a ride on U.S. 23 Country Music Highway Road to Fame talent search. Let's all discover the next Loretta Lynn or Dwight Yoakam! For details go to [www.cmhroadtofame.com](http://www.cmhroadtofame.com).

The star also represents the vast amount of entertainment in Prestonsburg. Prestonsburg is home to The Mountain Arts Center, a 1,050 seat theater that presents local talent as well as national headliners. Billie Jean Osborne's Kentucky Opry is our own troupe of talented performers. Jenny Wiley Theatre has been providing "magic under the stars" for decades with its classic Broadway type shows. StoneCrest Championship Golf Course, which is built on a reclaimed mountain top, puts you as close to the stars as you can get. The newest addition to a galaxy of fun is the East Kentucky Science Center & Planetarium with its traveling exhibits, laser shows and 40 foot domed planetarium.

For information on attractions, lodging, and events, go to [www.prestonsburgky.org](http://www.prestonsburgky.org) or call 1-800-844-4704.



*"Cinderella" at Jenny Wiley Theatre*



*Billie Jean Osborne's Kentucky Opry*



*StoneCrest Golf Course*

*Jenny Wiley Theatre has been entertaining Eastern Kentucky travelers like you for well over 4 decades! Located within picturesque Jenny Wiley State Resort Park, Jenny Wiley Theatre is the only professional theatre east of I-75. There's nothing quite like experiencing Broadway quality musicals, comedies and dramas under the stars in Jenny Wiley's beautiful amphitheatre or at one of our many indoor venues!*

*Many brilliant stars have graced the Jenny Wiley Stage over the years including Tony Award winner Michael Cerveris, television actress Sharon Lawrence, Broadway star James Barbour, Disney film star Tommy Kirk, funny man Jim Varney and "Trading Spaces" host Paige Davis. Who knows? During your visit you may see the next big star!*

*Looking ahead to 2013, JWT will expand its year round offerings and bring professional theatre to downtown Pikeville. A new, designated indoor theatre space will be constructed beginning in 2012 to provide Jenny Wiley Theatre with a permanent indoor theatre and to expand the cultural arts offerings in the City of Pikeville. We will continue our summer seasons in our amphitheatre space as we have for the past 47 years.*

*As you're enjoying the sites off the Country Music Highway (KY Route 23), stop by for a visit and experience Jenny Wiley Theatre's wonderful 2012 productions of THE MARVELOUS WONDERETTES, GREASE, HONK! The Ugly Duckling Musical, this fall THE LEGEND OF SLEEPY HOLLOW at the Mountain Arts Center and A CHRISTMAS CAROL for the holidays at the historic Sipp Theatre in Paintsville.*

*For tickets and information please call 1-877-CALL-JWT and make sure to visit [www.jwtheatre.com](http://www.jwtheatre.com) today.*

## Live Theatre!

The original 3D experience,  
without the silly glasses

The Legend of  
**SLEEPY  
HOLLOW**

All performances at the  
Mountain Arts Center

The Marvelous  
Wonderettes

Grease

HONK!

THE UGLY DUCKLING MUSICAL

A  
Christmas  
Carol

All performances at the  
Sipp Theatre

877-CALL-JWT

www.jwtheatre.com

Jenny Wiley Theatre is a non-profit organization that provides funding from individuals, corporations, Paintsville, Tennessee, the City of Pikeville, the Kentucky Arts Council, and the Kentucky Department of Travel. The Kentucky Arts Council, the state arts agency, supports JWT with state art dollars and federal funding from the National Endowment for the Arts.





# Pike County KENTUCKY

*"Where Beauty Abides and Hospitality Flows!"*

Live Music

Bushwhacking on the Russell Fork

The Eastern Kentucky Expo Center

Cut-Thru Adventures

Artists Collaborative Theatre, inc.

Big Sandy Heritage Museum

Hillbilly Days

Pikeville Cut-Through Project

TourPikeCounty.com • tourpikecounty@setel.com

For a free information packet call Pike County Tourism CVB at 800-844-7453 or 606 432-5063

Pike County Like fb.com/PikeTourism

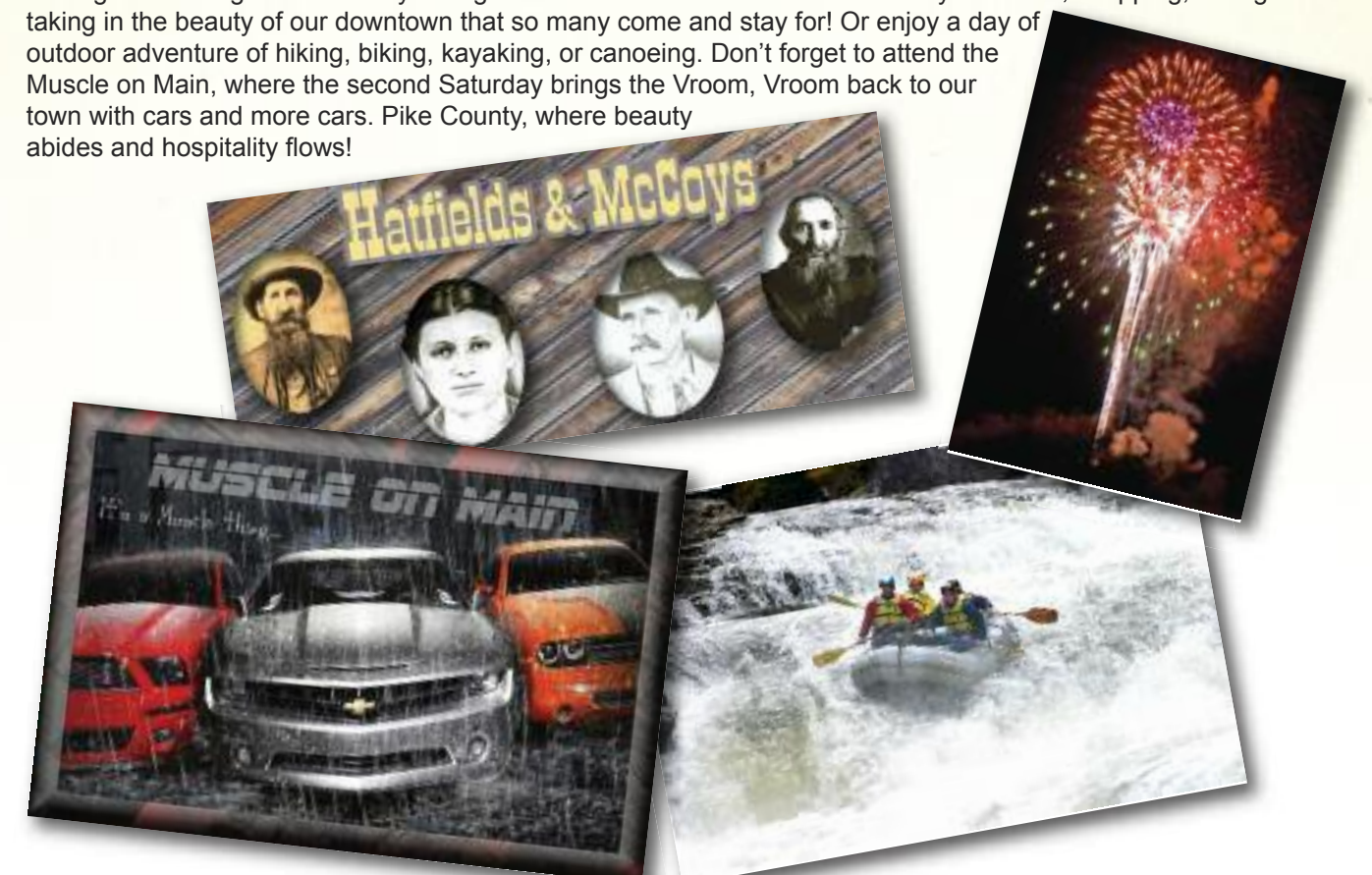
Kentucky UNBRIDLED SPIRIT

## Pike County, Kentu

Pike County - Learn the history of the largest county in Kentucky by visiting the Hatfield and McCoy sites and hearing the stories surrounding the two families that involved love, triumph and the Civil War. At the Heritage Museum it all comes to life as history reawakening, or visit the Pikeville Cut Through Project, an immense earth moving project second only to the Panama Canal in size and scope, is an engineering marvel that must be seen to be appreciated.

Take in an evening performance at the Artist Collaborative Theatre in Elkhorn City or a concert at the East Kentucky Expo Center, where music and arts come to life! Every April you will find homecomers heading back to Pike County to attend the second largest festival in the state, the Hillbilly Days Festival, where we see our old friends and make new ones!

Seeing is believing in Pikeville by taking in an afternoon walk of our Historic City locations, shopping, eating and taking in the beauty of our downtown that so many come and stay for! Or enjoy a day of outdoor adventure of hiking, biking, kayaking, or canoeing. Don't forget to attend the Muscle on Main, where the second Saturday brings the Vroom, Vroom back to our town with cars and more cars. Pike County, where beauty abides and hospitality flows!







Small town hospitality.  
Big city feel.

1.800.654.1944

Morehead Conference Center  
MOREHEAD, KENTUCKY

www.moreheadcc.com



Kentucky UNBRIDLED SPIRIT

# EXPLORE

MOREHEAD & ROWAN COUNTY



MOREHEAD  
TOURISM  
COMMISSION

For more information,  
call 800.654.1944 or visit  
moreheadtourism.com.





# There's Only One Kentucky.



KENTUCKYTOURISM.COM • 1-800-225-TRIP



## Grayson

Kentucky Heart of the Parks

**ATTRACTIONS**  
 Grayson Lake State Park • Quilt Trail Driving Tour  
 Rockspring Winery • Hidden Cove Golf Course  
 Antiques & Craft Shops • Little Sandy Raceway  
 Smokey Valley Truck Stop (known as "Diners, Dribbles & Grease")  
 Carter Cave State Resort Park

**Grayson Tourism & Convention Commission**  
**606.474.8740**  
 heartoftheparks@windstream.net  
 www.heartoftheparks.com

## MT. STERLING, KY

Gateway between the Bluegrass and the Mountains

### ATTRACTIONS

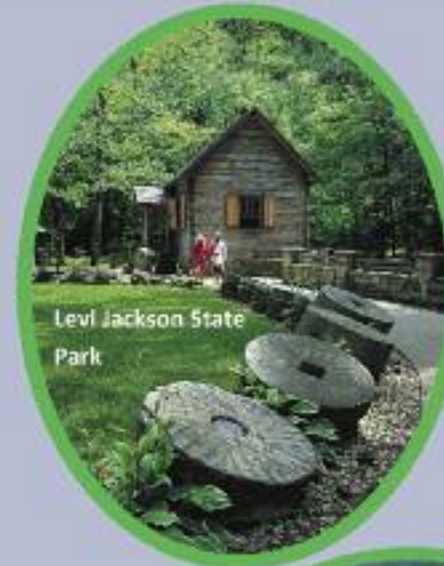
- **Historic Downtown**
- **Gateway Regional Arts Center**  
Open Tues.-Sat.
- **Old Silo** - #1 Public Golf Course in Kentucky for 2010 by Golf Digest
- **Ruth Hunt Candy** - Official Candy of the Kentucky Derby
- **Fun on the Farm** - at Bramble Ridge Orchard and Two Sisters Pumpkin Patch and Christmas

**For more information or to get your free visitors guide call Toll Free**  
**866-415-7439**  
**I-64 at Exit 110**  
**Affordable Overnight Packages!**

Visit us on Facebook   
 www.mtsterlingtourism.com

## London-Laurel County

Welcome to London-Laurel County, the vacation crossroads, located in the heart of the Daniel Boone National Forest. Featuring Laurel River Lake. London offers over 1300 hotel rooms all within a short drive to several states and one national park.



London-Laurel Co. Tourist Commission

140 Faith Assembly Church Rd., London, KY 40741

Toll Free: 800-348-0095

www.laurelkytourism.com



## World Chicken Festival

In Beautiful Downtown London, Kentucky

September 27-30, 2012

World Chicken Festival  
 140 Faith Assembly Church Rd  
 London, Ky 40741  
 Phone: 606-878-6900  
 Fax: 606-877-1689  
 www.chickenfestival.com



Cooking, Pinch, Music, Food, Magic Shows, Arts & Crafts, Carnival Rides, Car Show, Parade, and much more!



The World's Largest Stainless Steel Frying Pan!



Four Fun-Filled Days with Activities for Everyone!







## Explore Lawrence County KENTUCKY



Fred M. Vinson House



Restored Historic Home



Yatesville Lake



Fallsburg Falls



Saddle Club

## "Heart of the Country Music Highway"

Lawrence County was founded in 1822. The area is rich in Civil War history. Fort Bishop stood watch over Louisa, which has been the county seat since 1823. Yatesville Lake State Park opened in 1992 and has 2300 acres to fish, swim or boat at your leisure. Eagle Ridge Golf Course is an 18 hole championship course that has received the Golf Digest Magazine 2005 national award. If you're interested in camping, hiking, picnicking or nature, Lawrence County is the place for you. We ask that you take time to Explore our wonderful county. It is a nice place to Work, Live and Play.



[www.LawrenceCoKyTourism.com](http://www.LawrenceCoKyTourism.com)

### LODGING

Best Western Plus Louisa 18199 US 23 606-638-3420  
Super 8 Motel 191 Falls Creek 606-638-7888  
Creek Side Cabins and RV Park: 5462 North Highway 3  
606-686-2915  
Joes Lost Creek Cabins, 606-297-5005 740 US HIGHWAY 23  
Mile Marker #1, 4 Cabins  
Falls Campground, US Highway 3, Fallsburg KY 41230 606-686-3398  
Lawrence County Park-Boones Landing Cabin Rentals  
77 Wilderness Road 606-673-1166  
Yatesville Lake State Park Camp Ground Pleasant Ridge Road  
606-673-1490  
Budget Inn 117 East Madison Street, Louisa

### EVENTS

Front Porch Pickin, Louisa Community Center  
Contact Charlie Fyffe 606-638-4875  
US 23 Country Music Highway Yard Sale, Last weekend in May.  
Lawrence County Septemberfest, 1st Weekend after Labor day.  
Lawrence County Farm and Home Field Day, July 13, 2012  
at the Jay Sexton Farm.  
July 4th Celebration, Downtown Louisa, Music, Fireworks,  
fun for the whole family.  
Lawrence County Fair, 1st Weekend in August  
Heritage Harvest Tour, KY 3 driving tour, through Lawrence and  
Boyd County. September 29, 2012  
Fallsburg Haunted House, Weekends in October



[www.LawrenceCoKyTourism.com](http://www.LawrenceCoKyTourism.com)



Yatesville Lake State Park

### RESTAURANTS

Dees Drive Inn, Downtown Louisa  
Kentucky Fried Chicken  
Rt 32 and 2565

### ATTRACTIONS

Fred M Vinson Museum 315 E  
Madison 606-638-0078  
Painted Cow Gallery  
103 South Main Cross 606-638-1313  
Falls Creek Pavillion and  
Country Music Highway  
Welcome Center

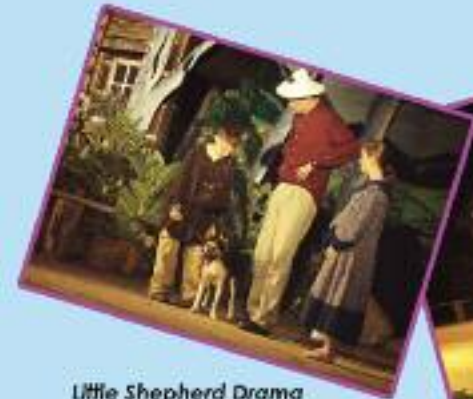


# Letcher County, Kentucky

One Mountain Soars, Three Rivers Start,  
And your Journey begins in  
**LETCHER COUNTY**



**Mountain Heritage Festival**  
September 24-29, 2012



**Little Shepherd Drama**  
June 16-September 1, 2012



**Letcher County** is located in southeastern Kentucky near the Virginia border. Known for our majestic mountains and other natural beauties such as Bad Branch Falls, Little Shepherd Trail, and Fish Pond Lake, Letcher County has more to offer than just what meets the eye.

Letcher County boasts a growing industrial site and willing workforce as well as recreational opportunities including an 18-hole world-class golf course, and friendly neighbors to lend a helping hand. We invite you to come see all that Letcher County has to offer.

**Third Annual ATV/UTV Mud Sling** – May 5, start time 10am. Contact Steven Burke 606-634-9253 or Jessica Brown 606-335-0566

**20 Mile Yard Sale** – May 4 & 5. Hwy 931 & Hwy 7. Contact Shirley Sexton 606-633-2519

**Carcassonne Community Square Dance** – Caller Randy Wilson. May 12, June 9, July 14, August 11, Sept. 8, & Oct. 13, 7pm. Dancing from 8-10pm. Contact Dale Johnson 606-633-2519

**Sugar Grove Opry Mountain Coal Music Festival** May 11 & 12. Kingdom Come Elementary School, Unifork KY (HWY 160) Contact Gary Joseph 606-279-5758, Larry Jones 606-536-4501, Community Ctr 606-589-9194

**Battle of the Bands, Benefit for Autism** – Free admission, donations collected for Letcher County Autism Society. May 26. Start time 10am. Neon Elementary School. Contact 606-335-9275.

**Seedtime Artwalk** – Exhibit opens on Thursday, May 24, at the Underground Gallery, 229 Main Street, Whitesburg, KY.

**Artwalk** – June 9, 2012, 2-7pm. Gallery exhibitors contact Pat Shelton 606-632-9542. Downtown exhibitors contact David Narramore 606-633-5951

**Mud Fest 2012** – Food, fun, fourwheelin', & live entertainment. Time/Date TBA. Contact Steven Burke 606-634-9253 or Jessica Brown 606-335-0566

**Bluegrass Festival by the Creek** – June 5, Campbell's Branch School, Cornettsville, KY

**Mini-Mudders ATV/UTV Youth Ride** – June 9 & July 14. For kids 12 and under, beginning at 12pm. Contact Steven Burke 606-634-9253 or Jessica Brown 606-335-0566

**Seedtime Festival** – June 7-9, Contact Brett Ratliff 606-633-0108

**Little Shepherd Drama Cast Party** – Contact ticket office 606-832-1453

**Little Shepherd Drama** – June 16, 23, 30, July 7, 14, 21, 28, August 4, 11, 18, 25, and Sept. 1 (Senior Appreciation Day) Contact 606-832-1453

**Mega-Mudders ATV/UTV Ride** – June 16, July 28, 11am. Ages 13 and up. Contact Steven Burke 606-633-9253 or Jessica Brown 606-335-9566

**Party at the Pond** – June 23. Free fishing tournament for kids 15 and under. Fishpond Lake. Contact Nick Whitaker 606-821-5625

**Third Annual ATV/UTV Mudworks Celebration** – July 7, beginning at 10am. Fireworks to follow ride. Contact Steven Burke 606-634-9253 or Jessica Brown 335-9253

**Bike Night** – July 14, registration 5pm. Event begins at 6pm. Contact Donna Halcomb 606-454-7586

**McRoberts Reunion** – August 2, 3, & 4. Contact Jim Scott 606-832-4789

**Bike Night** – 6 Time National Champion Ryan Young to perform. 2pm, 5pm, and 7pm. Downtown Whitesburg. Contact Donna Halcomb 606-454-7486

**Night in the Hills (ATV/UTV Night Ride)** – August 11, 8pm. Contact Jessica Brown 606-335-0566 or Steven Burke 606-634-9253

**Thunder on the Mountain: The Return of General John Hunt Morgan** August 10, 11, & 12. Contact Richard Brown 606-633-2226

**Riverside Days** – August 14, 17, & 18. Contact Ernestine Flint 606-832-2079 or 606-832-4331. [www.riversidedays.com](http://www.riversidedays.com)

**Jenkins Homecoming Days** – August 23, 24, & 25. Contact Chuck Anderson 606-832-4937

**20 Mile Yard Sale** – August 31 & September 1, HWY 931 and HWY 7 becomes the largest peddlers mall in the area. Contact Shirley Sexton 606-633-2519

**Isom Days** – August 30, Sept. 1 & 2. Contact Terry Caudill 606-633-8467

**Letcher County Coal Miners Memorial Bluegrass Festival** Monday, Sept. 3. Contact Robert Flemming 606-855-4075

**Heritage 2K12 Mini-Truck and Car Show** – Sept. 6, 7, & 8. Contact Lee Michael Caudill at 606-633-4823

**Neon Area Days** – Sept. 7 & 8. Contact Jeff and Charlene Potter 606-855-7703

**Third Annual ATV/UTV Fall Four-Wheeling** – Sept. 15, 10am. Contact Steven Burke 606-634-9253 or Jessica Brown 606-335-0566

**Mountain Heritage Festival** – Week of Sept. 24-29. Contact Lee Anna Mullins 606-633-9644

**Fall Artwalk** – Exhibit opens Sept. 27 at the Underground Gallery, 220 Main Street, Whitesburg, KY

**Artwalk** – Oct. 27, 4-9pm. Contact Pat Shelton 606-632-9542 to exhibit at the gallery, contact David Narramore 606-633-5951 to exhibit at a business in town.

**Bike Night Weekend** – Sept. 28 & 29. Contact Donna Halcombe 606-454-7486

**Indian Summer** – Oct. 5 & 6. Little Shepherd Amphitheater, Jenkins KY. Contact Donna Boggs 606-832-2416

**Haymond Homecoming** – October – Contact Charles Whitaker 606-855-4541

**Blackey Day** – Oct. 13. Contact Tammy Whitaker 606-633-7451 or 606-634-7202

**Bike Night** – Oct. 13, 6-11. Downtown Whitesburg. Contact Donna Halcomb 606-454-7486

**Molasses Stir-off** – Oct. 13, 10am-4pm. BOL Battlefield near the General Store, Leatherwood KY

**American Chestnut Festival** – Oct. 20, Kingdom Come Elementary School, Unifork, KY. Contact Gary Joseph 606-279-5758, Larry Jones 606-536-4501, or Community Center 606-589-9194

**Haunted Hayride** – Fishpond Lake, Oct. 19 & 20. Contact Mike Dingus 606-855-7900



**Thunder on the Mountain:**  
the Retaking of Pound Gap by  
Confederate General  
John Hunt Morgan  
August 10, 11, & 12, 2012



**Snake Man Verlin Short**  
as seen on the hit  
Animal Planet TV show.

**Haunted Forest** – Oct. 26 & 27. Little Shepherd Amphitheater, Jenkins KY. Ticket office 606-832-1453

**City of Whitesburg Safe Night** – Contact Eleanor Caudill 606-633-3700

**City of Jenkins Safe Night** – Contact Mayor G. C. Kincer 606-832-2142

**Christmas Artwalk Exhibit** – Opens to the public from Thursday, Nov. 29, Winter Hours 11am to 5pm. Christmas Artwalk – Dec. 14 (11am – 9pm) and Dec. 15 (11am – 5pm) at the Underground Gallery, 229 Main St., Jenkins KY. Contact Pat Shelton 606-632-9542

**Jenkins Christmas Parade** – Dec. 7, 6pm. Main Street, Jenkins KY

**Whitesburg Christmas Parade** – Dec. 14, 5pm

**Lighting of the Night** – Dec. 20, 5:30pm. The Crowd will meet and form at the Letcher County School Bus Garage at the beginning of Sandlick (HWY 931) and continue to Coburn Fire Department.

Contact Shirley Sexton 606-633-2519

Visit the place where Kentucky began.

[www.TourPineMtn.com](http://www.TourPineMtn.com)



# Stars of the Country Music Highway

What makes the Country Music Highway so unique? It's the vast number of Country Music Highway stars that hail from this region. Nowhere in the United States will you find a region more rich in musical heritage.

We begin our journey along the Country Music Highway in the north-east-most county of Greenup. Here, **Billy Ray Cyrus** formed his first band and honed his skill as a singer and a musician. Billy Ray later found another talent in acting, starring in the hit series *Doc*. Later, Billy Ray teamed up with his daughter, Miley, in the mega hit series *Hannah Montana*.

Moving south from Greenup County we enter Boyd County – home of **The Judds**. Naomi and Wynonna worked as a duo and won five grammys. They were named the CMA's *Duo of the Year* eight times. After Naomi's health problems forced her to leave the act, Wynonna became a solo sensation. Another famous Judd, **Ashley**, has found her passion in acting, achieving great success and landing leading roles in several major motion pictures.

Next down the line we come into Lawrence County, home of both **Ricky Skaggs** and **Larry Cordle**. Ricky began his career playing with such legends as Ralph Stanley and Keith Whitley. Ricky says he's just "trying to make a living" playing the music that he loves. With his band, Kentucky Thunder, backing him up, Ricky Skaggs is certainly one of the greats of bluegrass music.

**Larry Cordle**, also from Lawrence County, moved to Nashville in 1985 to be a staff writer for Amanda-Lin Music. At last count, Cordle's songs had appeared on projects that had sold a combined total of more than 50 million records, including artists like Alison Krauss, Garth Brooks, George Strait, Reba McEntire, Alan Jackson, and many others.

We keep moving south along the highway and come to Johnson County, home of **Loretta Lynn** and her baby sister **Crystal Gayle**. In the 1970's Loretta was one of the nation's most sought-after performers. She began singing duos with Conway Twitty and was the first woman to be named *Entertainer of the Year* by the Country Music Association. Loretta continues to perform across the United States, and has released several singles.

**Crystal Gayle**'s style was more pop, rock and Broadway along with a little gospel and country. Crystal received numerous awards including *Best Female Country Vocal Performance*, *Best Country Song* for *Don't It Make My Brown Eyes Blue*, and *Female Vocalist of the Year* for both the Academy of Country Music and the Country Music Association.

Johnson County is also home of **Hylo Brown**. His signature song, *Last to a Stranger*, was part of his first album and is in the collection at the Smithsonian in Washington, D.C. Hylo performed on television shows and concerts throughout the '60's and '70's. Hylo Brown passed away in 2003.

Our next stop takes us to Floyd County, home of **Dwight Yoakam**. Dwight moved to Nashville in 1977 to pursue a career in music. After a brief time in Nashville, Dwight moved to California, which was more receptive to his style of country. Dwight released an EP and hit the road with such artists as Los Lobos and The Violent Femmes. In 1991, Dwight began his acting career, starring in major motion pictures. Currently, Dwight is still active in recording, touring, and filmmaking.

Our next county along the highway is Pike, home of **Patty Loveless**. Patty began her musical career singing gospel with her mother. She eventually moved to Nashville, where she broke into the business by writing and performing with the Wilburn Brothers. Patty has had numerous number one hits and has received critical acclaim performing at many bluegrass festivals. Patty was inducted into the *Kentucky Music Hall of Fame* in April of 2011.

Our southern-most county is Letcher, home of **Gary Stewart**. Gary was born near the Virginia border. He moved to Nashville in the 1960's, where he first wrote songs and began his own recordings. His solo music career included a number one hit, *She's Actin' Single (I'm Drinkin' Doubles)*. After leaving the music scene for a time, he began recording again in 1990 and wrote songs until his death from a self-inflicted gunshot wound in 2003.

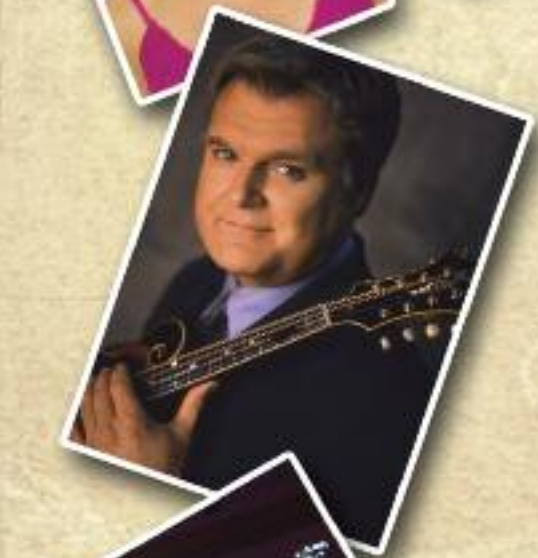
Right off the highway in Carter County we have the home of "The Storyteller," **Tom T. Hall**. Tom T.'s big break came in 1963 when Jimmy C. Newman recorded his song, *DJ for a Day*. Soon after, Tom T. moved to Nashville and wrote songs for dozens of country music stars, including Johnny Cash, George Jones, Loretta Lynn, Waylon Jennings, and Bobby Bare. One of his earliest songs, *Harper Valley PTA*, was recorded by Jeannie C. Riley and sold over six million copies. This song won him both a Grammy and CMA award and inspired a motion picture and television program.

Just off the highway we have **Keith Whitley** from nearby Elliott County. Whitley wrote many great country songs including *On the Other Hand*, *Nobody in His Right Mind Would've Left Her*, *Don't Close Your Eyes*, *When You Say Nothing at All*, *I'm No Stranger to the Rain*, and many others. In 1986 Whitley married singer Lorie Morgan and they had one child, Jesse Keith Whitley. Whitley passed away in 1989 of severe alcohol poisoning.

Why do so many great musicians, singers, and songwriters come from this stretch of highway? Some say it's in the water, so be sure to drink lots of our water on your visit to Eastern Kentucky. You could be the next big star!

For more information on the Country Music Highway and the stars that come from this region, visit our website:

[www.CountryMusicHighway.com](http://www.CountryMusicHighway.com)







### ***In search of the next generation of country stars***

The stretch of U.S. Route 23 known as the Country Music Highway may be only 144 miles long, but it has spread out into the hearts and minds of country music fans across America and around the world.

It would be hard to find someone who has never heard Loretta Lynn singing “Coal Miner’s Daughter” or cannot hum the chorus of Billy Ray Cyrus’ “Achy Breaky Heart.” Loretta and Billy Ray are just two of the superstars who hail from this part of Eastern Kentucky.

It’s quite a puzzle: why have so many great singers and musicians been born and raised here? Maybe it’s because youngsters would pick up dad’s guitar or mom’s old banjo and teach themselves to play on the front porch. Maybe it’s a tradition of storytelling, handed down from father to son, that evolves into country songwriting. Or maybe it’s true what they say ‘round here: There’s something in the water.

Whatever it is, there’s a musical heritage that must be kept alive and growing well into the twenty-first century. That is the premise that has given birth to The Road To Fame.

The Road To Fame was first conceived in 2011 as a way to find and develop the next generation of country artists from along the Country Music Highway. It was decided that the Road to Fame would be an annualized vocal competition, open to contestants between the ages of thirteen to thirty-five, born in or residing in any of the sixteen counties in Kentucky that surround U.S. Route 23.

Months of planning went into the development of the competition. Finally, all was ready. On January 31, 2012, Governor Steve Beshear and Country Music Highway native Tom T. Hall held a press conference in the Rotunda of the Capitol in Frankfort, Kentucky. Surrounded by reporters, a bank of television cameras and a satellite uplink, Governor Beshear announced that the Road to Fame was about to begin. The Governor even attempted to sing a few bars from one of the most well-known songs from the pen of Tom T. Hall: “Harper Valley PTA”!

Two weeks later, the Road To Fame was officially launched at a kick-off event held at the U.S. Route 23 Country Music Highway Museum in Paintsville, KY. Word spread quickly, thanks to the involvement of the area’s print and broadcast media.

Hundreds of hopeful young artists responded to the call for auditions, with the successful ones progressing to a series of qualifying rounds and semi-finals held at venues along the Highway, with the Grand Final held at the Mountain Arts Center in Prestonsburg, home of the Kentucky Opry.

The winner of the 2012 Road To Fame wins a course of career development with PCG Nashville, one of America’s leading artist development companies in America, as well as the opportunity to write and record an original song with Tom T. Hall in his private studio. Year after year, the Road To Fame will focus attention on the amazing talent that continues to be found among the hills and hollers along the beautiful Country Music Highway. So you be the judge: Is it something in the water?



***Road to Fame judges:  
Mike Harris, Molly Smith, & Bernard Porter***

[www.CMHRoadToFame.com](http://www.CMHRoadToFame.com)  
[www.Facebook.com/CMHRoadToFame](https://www.facebook.com/CMHRoadToFame)

**Road to Fame Finals 2012  
Mountain Arts Center, Prestonsburg  
1-888-MAC-ARTS (622-2787)**

**Saturday, June 16th 7:30pm**

**[www.CMHRoadToFame.com](http://www.CMHRoadToFame.com)  
(This may be the hottest ticket on the highway!)**

## **Our Proud *Road to Fame* Sponsors**



Crawdads’ Classics is honored to support the endeavors of the many talented singers and songwriters of Kentucky. Crawdads’ Classics is the official hot sauce of the St. Louis Blues, Nashville Predators, and the AllStar Cast television show airing on Outdoor Channel. In addition, it is the choice of the 2011 World Series Champions the St. Louis Cardinals. [www.crawdadsclassics.com](http://www.crawdadsclassics.com)



Highbridge Spring Water is a family owned and operated enterprise located in the tiny Kentucky town of Wilmore. The delicious refreshing taste of Highbridge Spring Water is achieved by a filtering process called Reverse Osmosis which removes certain particles and leaves the water crisp, sodium free and ready to be enjoyed. [www.highbridgesprings.com](http://www.highbridgesprings.com)



Founded in 2002 as the philanthropic division of Gibson Guitar Corp., the Gibson Foundation has a mission to make the world a better place for children. It accomplishes its goal by providing programmatic support to nearly 50 nonprofit organizations worldwide that advance the arts, education, health & welfare and environmental causes. [www.gibsonfoundation.org](http://www.gibsonfoundation.org)



Since 1898, the flavor of Music City is a family tradition. Now, Vietti produces several varieties, including with beans, no beans, Chili-Mac and Louisiana style, all with easy-pull tabs. Just bring your own spoon! [www.viettifoodsinc.com](http://www.viettifoodsinc.com)



Fairway Outdoor Advertising is one of the country's finest outdoor advertising companies with 17,400 billboard, poster & digital displays. Fairway provides our advertisers with excellent opportunities to reach their target audience at the right place and at the right time. Fairway’s Mid-Atlantic division is located in Ivel, Kentucky, and covers the entire Country Music Highway corridor. [www.fairwayoutdoor.com](http://www.fairwayoutdoor.com)



Our food’s not the only thing that’s Legendary at the Roadhouse — our fun is too! From our line dancers to our jukebox to our friendly servers, you’ll enjoy every second you spend in a Texas Roadhouse. [www.texasroadhouse.com](http://www.texasroadhouse.com)



TOUR Southern and Eastern Kentucky (TOUR SEKY) is a nonprofit organization created in 1987 by Congressman Harold “Hal” Rogers (KY 5th Dist.), originally named the Southern and Eastern Kentucky Tourism Development Association (SEKTD). TOUR’s vision is to foster economic development and improve the resident’s quality of life. [www.tourseky.com](http://www.tourseky.com)



Breaking into the music industry is no easy feat, and there are no guarantees in this business. Whether you are a new artist or a seasoned performer, we will customize an individual approach and build a specialized program to accommodate your needs for creative and professional growth. With PCG Nashville leading the way, you will launch your music career toward success! [www.pcnashville.com](http://www.pcnashville.com)

*Sponsors continued on next page*





R&S is now a full service merchandise design, manufacturing, sales and licensing company serving brands and entertainers world-wide. [www.richardsandsouthern.com](http://www.richardsandsouthern.com)



Ray, Foley, Hensley & Company are Certified Public Accountants and Consultants, with the emphasis on consulting and helping our clients arrive at sound financial decisions. The company has earned a reputation for our concern for quality and personal attention and closely coordinates the performance of its audit, tax, accounting and consulting services. [www.rfhco.com](http://www.rfhco.com)



Murray State University is consistently ranked among the top universities in the country by college guides such as "U.S. News' America's Best Colleges" and "Forbes" for its quality and affordability. Our music business program has strong ties to Nashville and the entertainment industry through the College of Knowledge presented on campus each semester by the Nashville Association of Talent Directors. [www.murraystate.edu](http://www.murraystate.edu)



The Fannin Automotive Family. A History of Success.. The Fannin Automotive Family will always extend a genuine personal touch to each and every customer. Helpful, familiar people. state-of-the-art facilities. Hassle-free shopping. Honest low price. All part of the tried-and-true family tradition you'll come to appreciate at The Fannin Automotive Family of Dealerships. [www.fanninmotors.com](http://www.fanninmotors.com)

**PCG NASHVILLE**

The Science of Artist Development

[pcgnashville.com](http://pcgnashville.com)

## Staci Carriere

EAST KENTUCKY ARTIST, STACI CARRIERE, IS MAKING A BIG SPLASH ON THE MUSIC SCENE!

- \*SINGER, SONGWRITER, MUSICIAN (UKULELE, GUITAR, VIOLIN & PIANO)
- \*BEGAN PERFORMING WITH THE KENTUCKY OPRY AND THE JENNY WILEY THEATRE AT THE AGE OF SIX
- \*STAGE ACTOR WITH ROLES IN "SOUTH PACIFIC", "JOSEPH & THE AMAZING TECHNICOLOR DREAMCOAT", "ANNIE", AND MORE
- \*RECEIVED AWARDS FOR SONGWRITING FROM FRANK BRONN INTERNATIONAL SONGWRITING FESTIVAL AND THE KENTUCKY MUSIC FESTIVAL
- \*CAST IN BRIGHAM YOUNG UNIVERSITY'S REALITY SHOW "STARRIZ"
- \*HER CO-WRITTEN SONG, "WAITING FOR ME" WAS SELECTED AS THE THEME SONG FOR THE CHILDREN'S MIRACLE NETWORK HOSPITALS, AND SHE PERFORMED IT LIVE AT DISNEYWORLD AS PART OF THEIR NATIONAL GALA

StaciCarriere.com  
facebook.com/StaciMcCarriere  
Booking information:  
Goodtyme Productions 1-888-790-2365  
ken@goodtyme.com

## VISIT HISTORIC DOWNTOWN PAINTSVILLE

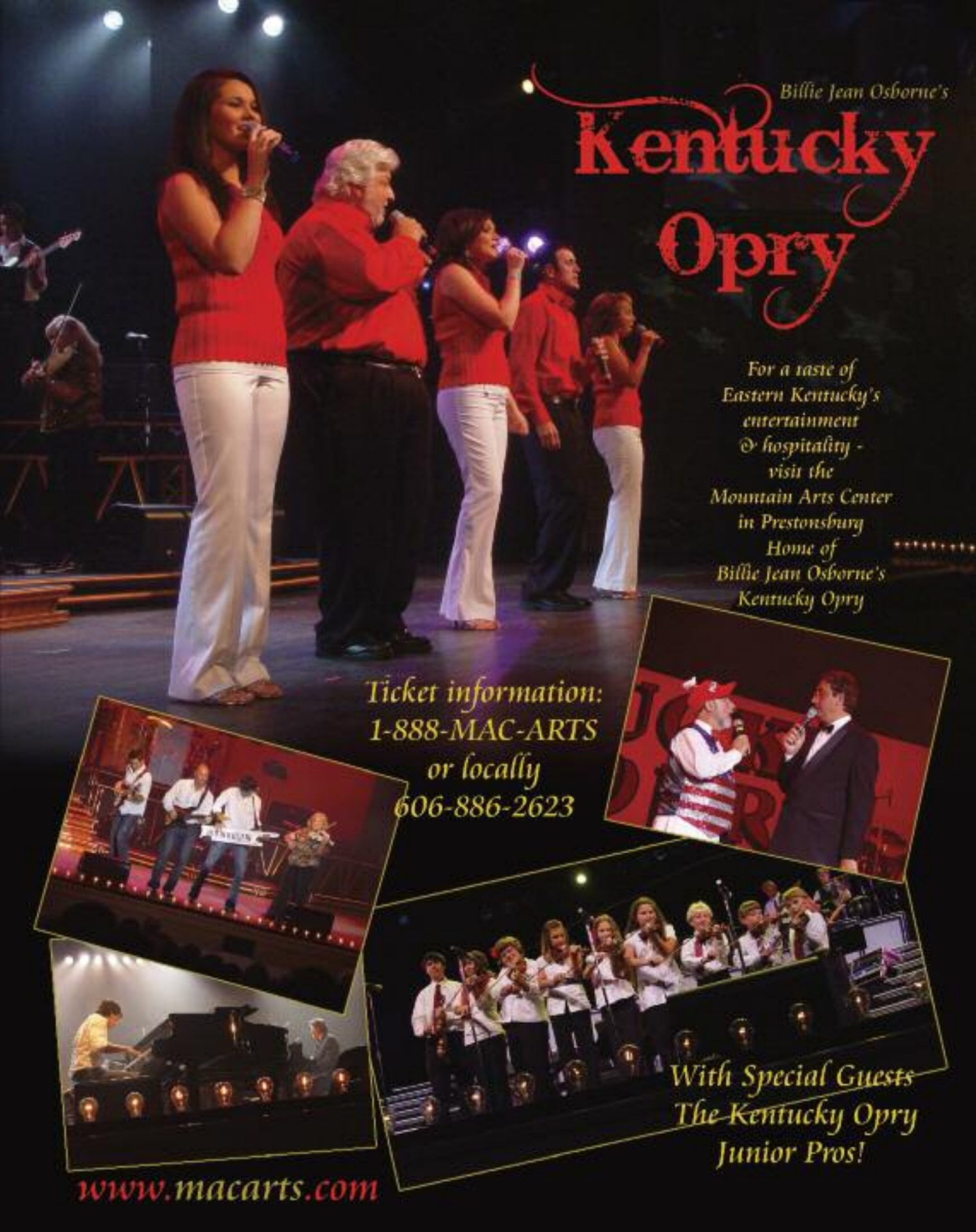
### HISTORY...SHOPPING...DINING...ANTIQUING

Treasures can always be found in the many antique shops that line the streets of downtown Paintsville. From antique furniture to luxurious jewelry - we have it all in the heart of Paintsville.

Come find what your heart desires!

[www.VisitPaintsvilleKy.com](http://www.VisitPaintsvilleKy.com)  
606-297-1469







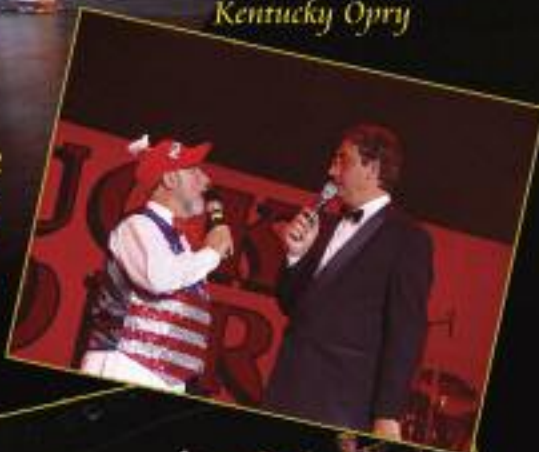
Billie Jean Osborne's  
**Kentucky Opry**

For a taste of  
Eastern Kentucky's  
entertainment  
& hospitality -  
visit the  
Mountain Arts Center  
in Prestonsburg  
Home of  
Billie Jean Osborne's  
Kentucky Opry

**Ticket information:**  
1-888-MAC-ARTS  
or locally  
606-886-2623

With Special Guests  
The Kentucky Opry  
Junior Pros!

[www.macarts.com](http://www.macarts.com)

# Breaks Interstate Park

In 1954, through the joint efforts of Virginia and Kentucky, the United States Congress created this park as a way to conserve the rugged beauty of the area, and its centerpiece -- the deepest river gorge east of the Mississippi River. Breaks Park covers 4,600 acres in Kentucky and Virginia and has the special distinction of being one of only two interstate parks in the country.

The history of Breaks is deep and colorful. It began more than 180 million years ago when the entire area was covered by a vast inland sea. As time passed and the Earth's climate began to change, the sea receded and the waterway that is now the Russell Fork River began to carve the beautiful, immense gorge that we now call the 'Breaks'.

It was Daniel Boone who is credited with discovering the Breaks in 1767 as he attempted to find improved trails westward into Kentucky and the Ohio River Valley. The Breaks proved to be a very rare passageway, or break along the 125-mile long Pine Mountain.

Today you'll find cabins, cottages, camping, hiking, biking, fishing, horseback riding and more in addition to a brand new water park facility that's scheduled to open in Summer 2012. Come find your adventure at Breaks Park: The Grand Canyon of the South!

[www.BreaksPark.com](http://www.BreaksPark.com)





# ADVENTURE INTO THE HILLS AND HOLLOW THAT INSPIRED THE LEGENDS OF KENTUCKY'S COUNTRY MUSIC HIGHWAY

Butcher Hollow  
Pine Mountain Trail  
Little Shepherd Trail  
Dawkins Line (coming soon)  
Greenbo Lake State Resort Park  
Yatesville Lake State Park  
Paintsville Lake State Park  
Jenny Wiley State Resort Park  
Fishtrap Lake State Park



## THE KENTUCKY CENTER FOR TRADITIONAL MUSIC

THE RIGHT TIME IS NOW AND THE PLACE IS  
**MOREHEAD STATE UNIVERSITY**  
FOR THIS REMARKABLE PROGRAM!

WE TEACH STUDENTS AND THE PUBLIC  
ABOUT TRADITIONAL MUSIC. WE PRESERVE  
AND DEVELOP THE ART FORM AND REPRESENT  
OUR CULTURAL HERITAGE THROUGH PERFORMANCE,  
EDUCATIONAL OUTREACH AND INTERACTION WITH  
THE COMMUNITY IN THE MOREHEAD STATE UNIVERSITY  
SERVICE REGION AND BEYOND.



149 EAST MAIN STREET, MOREHEAD, KY 40351 • 806-783-9001  
[WWW.MOREHEADSTATE.EDU/KCTM](http://WWW.MOREHEADSTATE.EDU/KCTM)



### "Driving" the Country Music Highway

We are pleased to inform all golfers that we have some of the most outstanding golf courses available right here along the Country Music Highway. The scenery and layouts of each of these courses are unique and breathtaking. You will also be amazed at the affordability of each golf course featured here. It would be well worth spending a few days in the region to see how many of these golf courses you could visit. While you are here, enjoy all the other sights and sounds available across this beautiful National Scenic Byway.



### Paintsville Golf Course



[www.PaintsvilleGolfCourse.com](http://www.PaintsvilleGolfCourse.com)

Established in 1929, the Paintsville Golf Course was one of the first 18-hole courses in the Kentucky Highlands. The course architect was the late Dr. Paul B. Hall, a member of the Kentucky Golf Association Hall of Fame.

3000 Ky Rt 1107, Paintsville, KY  
For tee times call:  
**606-789-4234**



### 18 Hole Championship Course

Owned and Operated by the  
City of Prestonsburg

- Fully stocked Pro Shop
- Driving Range
- Practice Greens
- Restaurant
- Lessons Available
- Full Club Repair

For Tee Times Call 606-886-1006  
918 Clubhouse Drive  
Prestonsburg, KY 41653



[www.STONECRESTKY.COM](http://www.STONECRESTKY.COM)



### RAVEN ROCK GOLF COURSE

386 Golf Course Lane, Jenkins, KY

606-832-2955

[www.RavenRockGolf.com](http://www.RavenRockGolf.com)

Welcome to Raven Rock Golf Club... We offer the finest golfing experience for you and your group. You can relax in our new clubhouse, use our driving range to practice and take some lessons with us here should you need to improve your game. We look forward to seeing you soon at Raven Rock!

Brett Richards PGA Head Professional

## David Appalachian Crafts

David Appalachian Crafts is a non-profit organization aiming at preserving traditional mountain crafts including beautiful patchwork quilts and pillow covers, baskets, pottery, wood whittings, sewn items, dolls, wooden toys, painted gourds, fabric Christmas ornaments and many other crafts.



Founded in 1972, as a way to help area residents improve the quality of their lives, through its activities over 65 people are able to supplement their income. During economic hardship, the members of this small community have come together to create the crafts that reflect the beauty of their homeland and to perpetuate the sense of community and self-sufficiency that characterize their pioneer ancestors.

David Appalachian Crafts is a program of St. Vincent Mission in David, KY. Their goal is preserving our Appalachian heritage through the hand-crafted creations of their crafters. The store supports and encourages the work of local artists by showcasing their work in the craft store and online, selling wholesale to other craft stores and taking their creations to crafts shows around the country.

2012 marks the 40th anniversary of the David Appalachian Crafts. Plans are underway for a combined celebration with St. Vincent Mission, which celebrates its 45th anniversary in 2013. More information can be found at [davidappalachiancrafts.com](http://davidappalachiancrafts.com) and [stvincentmission.org](http://stvincentmission.org) as plans progress.

David Appalachian Crafts is nestled in the hills of David, KY, a short 15 minute drive from the Middle Creek Battlefield in Prestonsburg, KY on KY RT 404 about 6 miles from RT 114.

The hours of operation are 9am-6pm Monday through Friday and 9am-4pm Saturday. For more information contact the craft center at 606-886-2377 or send questions to [davidappalachiancrafts@yahoo.com](mailto:davidappalachiancrafts@yahoo.com). Don't forget to check out our online store at

[www.DavidAppalachianCrafts.com](http://www.DavidAppalachianCrafts.com)

Letcher County



## The Courthouse Cafe & The Cozy Corner

Located in an historic building (circa 1911)  
127 Main Street, Whitesburg, KY

- Lunch and Dinner Specials
- Homemade Soups, Salads, & Desserts
- Sandwiches
- All made fresh daily!!

- Homemade Mountain Quilts
- Kentucky Appalachian Heritage Books
- Crafts • Folk Art
- Kentucky Collection
- High Quality Local & Regional Art

Monday-Thursday: 11am-8:30pm  
Friday: 11am-9:30pm  
Saturday: 4:30pm-9:30pm

Courthouse Cafe: 1-606-633-5859  
Cozy Corner: 1-606-633-9637



**"The Perfect Setting"**

*Cafe*  
Dine in an atmosphere that is similar to a cafe on the streets of France.  
Homemade items on the menu. "Lite Menu" provided

*Catering*  
We can cater meals for parties, weddings, or your holiday festivities.  
Call us for a quote!

*Gift Shop*  
Candles, gift & food baskets, & flower arrangements

[www.TrishsPerfectSetting.com](http://www.TrishsPerfectSetting.com)

 McDowell, KY  
Phone: 606-377-6005  
Fax: 606-377-6088

 **Unique BBQ Experience**

- Pulled Brisket & Pork
- Mouth Watering Ribs
- Tasty Sides • Family Friendly

**2 Locations**

<b>Pikeville</b> 130 Mayo Circle 606.437.9511	<b>Prestonsburg</b> 341 University Dr. 606.889.9119
---	---

Hours: Monday - Saturday 11am - 10pm

*Extremely popular dining location with very high consumer approval!*

 **Lizzy B's**  
*Cafe & Bakery*

Unique Dining Experience!  
Homemade Specialty Sandwiches, Pizza & Desserts

Route 321, 1 mile North of Prestonsburg  
(at the bottom of StoneCrest hill)

**606.886.2844**

*"A little bit of city in the country"*

Find us on 

**Wilma's Restaurant**  
*Since 1964*

*Specializing in*

- ❖ Home Cooking
- ❖ Catering
- ❖ Homemade Pies



*Operated by Wilma Elbridge*  
212 Court Street  
Paintsville, KY 41240  
**606-789-5972**

 **pine mountain GRILL**

[www.PineMountainGrill.com](http://www.PineMountainGrill.com)

*Follow the delectable aroma to the finest restaurant in the mountains...*

- Wonderful family atmosphere
- Delicious breakfast, lunch & dinner menu
- Large areas for special occasions
- Gift shop with extraordinary items & registry
- Caring staff to insure a very pleasant experience



**45 Highway 119 S Whitesburg, KY 41858-7131** **Phone: (606) 633-1183**

 **BILLY RAY'S Restaurant**  
HOME OF THE ORIGINAL POOL ROOM BURGER

101 N. Front Street • Prestonsburg, KY  
606.886.1744

Sit back and enjoy some delicious home cooking!!  
From our "Famous Pool Room Hamburgers" to the most tasty Prime Rib you have ever eaten!!!  
And don't forget to save room for one of the many homemade desserts made fresh daily!

*Candle Light Dinner every Friday and Saturday night.*

Hours: Mon-Thurs: 6am - 8pm  
Fri & Sat: 6am - 10pm Sunday: 8am - 4pm

 **Cloud 9 Cafe**



**Located at Big Sandy Regional Airport**

Open 7 days/week  
Monday thru Thursday: 10am to 8pm  
Friday and Saturday: 10am to 9pm  
Sunday: 11am to 6pm

Daily Lunch Specials  
Prime Rib & Baby Back Ribs on Weekends

606-298-2799  
[www.bigsandyregional.com/cafe](http://www.bigsandyregional.com/cafe)



**East Kentucky Expo Center**

Concerts Events Meetings Sports  
Banquets Catering

Your Source for  
**Entertainment**

Home To  
**UPIKE**

126 Main St  
Pikeville KY 606.444.5500  
www.EastKyExpo.com

Kentucky Music Trail 2012  
**Charlie Daniels Band**  
Saturday, May 19 @ 8 PM

Paramount  
arts center  
**Clint Black**  
Friday, June 22 @ 8 PM

Tickets: \$10, \$15, \$50

Sponsored by: Mr. Margaret Adine  
Blacktop Industries, Clark Pump N Shop  
Elk Springs Resort, Franklin Automotive Family  
Judy Jennings Marathon Petroleum Company  
Bob Powers/Henry Lynch, Teresa Wright Powers/  
REMAX, Texas Roadhouse, Time Warner Cable  
WCHS TV8

Tickets: \$10, \$15, \$50

paramountartscenter.com 606.324.3175

Floyd County

**"There are golf courses that  
need playing, race tracks that  
need racing, and country music  
that needs to be heard."**

The power of being there. Go. Go. Go.

51 Hal Rogers Drive  
Prestonsburg, KY  
606-886-2555  
Adjacent to the  
Mountain Arts Center

- Newly Remodeled Rooms
- Free High-Speed Internet
- Indoor Pool
- Free Hot Breakfast
- Whirlpool Suites

**COMFORT SUITES**

BY CHOICE HOTELS  
1-800-4CHOICE  
choicehotels.com

SERVING UP SOUTHERN HOSPITALITY

**AMENITIES INCLUDE**

- 117 Newly Renovated Rooms
- High-Speed Wireless Internet
- Large Meeting Facility
- Exercise Facility with Sauna & Spa
- Heated Outdoor Pool
- Free local cable, HBO and over 65 cable channels
- Business & Corporate Rates Available

**Heritage House Hotels**

606-886-0001 or 1-800-466-5220

1887 US Hwy. 23 North, Prestonsburg, Ky 41653

**Hampton Inn**

WITH  
**HAMPTON INN**  
YOU ARE ALWAYS  
A **WINNER!**

**HAMPTON INN** Always provides you with a winning combination.

- ♦ "Cloud 9" Beds ♦ White duvets, guaranteed clean with each new guest
- ♦ Free hot breakfast ♦ Complimentary high speed internet
- ♦ Fitness Center ♦ Business Center
- ♦ Free local faxing (outgoing) ♦ Free local telephone calls
- ♦ Indoor swimming pool/whirlpool

And so much more that will guarantee you a great stay...or you do not pay!

831 Hambley Blvd., Pikeville, KY 606-432-8181 or 1-800-HAMPTON



# All Good Things

128 South Front Avenue  
Prestonsburg KY

- Consignment furniture, decor & fine clothing
- Modern Kentucky-crafted decor, jewelry & clothing
- Hand painted furniture and decor
- Sweet Shoppe



606.886.1029

[www.all-good-things-ky.com](http://www.all-good-things-ky.com)  
[facebook.com/allgoodthingshome](https://facebook.com/allgoodthingshome)



## *The Beautiful Heartwood Center along The Crooked Road is Now Open!*

Crafts, music, food & history are all available at the new Heartwood Center in Abington, Virginia. The Heartwood Center showcases the wonderful artisans who live in the region and the amazing handcrafts that they create. The Heartwood building was handcrafted with some of the most beautiful Appalachian hardwoods that are featured in floors, ceilings and displays. Those who visit will also learn about the other incredible places and people to visit along The Crooked Road.

What is The Crooked Road? It is similar to its cousin The Country Music Highway in Kentucky. The U.S. 23 Country Music Highway extends southward from Kentucky into the southwest part of Virginia where we find the beginning of The Crooked Road. The Crooked Road's major focus is on promoting, preserving and celebrating the heritage of traditional music that the region is famous for. They are also heavily involved in supporting traditional music education in southwest Virginia public schools and community colleges.

Travelers to the region can expect to see some exceptional traditional music at multiple venues, fine crafts, great food and friendly folks. We highly recommend you allow enough time to take up the sights and sounds of The Crooked Road.

[www.TheCrookedRoad.org](http://www.TheCrookedRoad.org)



MAKE SURE TO VISIT ONE OF OUR MANY  
Fairs and Festivals Along the  
COUNTRY MUSIC HIGHWAY

For more information visit:

[www.CountryMusicHighway.com](http://www.CountryMusicHighway.com)  
and choose "Calendar of Events"

## *Stars Along the Country Music Highway*



1. Billy Ray Cyrus - Flatwoods
2. The Judds - Ashland
3. Tam T. Hall - Olive Hill
4. Keith Whitley - Sandy Hook
5. Ricky Skaggs - Blaine
6. Hyla Brown - River
7. Lorella Lynn - Van Lear
8. Crystal Gayle - Van Lear
9. Dwight Yoakam - Betsy Layne
10. Patty Loveless - Blkhor City
11. Gary Stewart - Jenkins

Advertisers:



1. Huntington Tourism
2. Mountain HomePlace
3. Country Music Highway Museum
4. Jenny Wiley Theatre
5. Kentucky Opry
6. Breaks Interstate Park
7. StoneCrest Golf Course
8. Paintsville Golf Course
9. Raven Rock Golf Course
10. David Appalachian Crafts
11. The Courthouse Cafe & Cozy Corner
12. Pine Mountain Grill
13. Pig in a Poke
14. Lizzy B's Cafe & Bakery
15. Billy Ray's Restaurant
16. Cloud 9 Restaurant
17. East Kentucky Expo Center
18. All Good Things
19. Heritage Inn Prestonsburg
20. Comfort Suites Prestonsburg
21. Hampton Inn Pikeville
22. Paramount Arts Center
23. The Perfect Setting Cafe
24. Historic Downtown Paintsville



\*\*Please note: All locations are approximate, not exact. For more detailed information, refer to the ads for phone numbers and addresses.





BROUGHT TO YOU IN PART BY

# Paintsville Tourism

"Where the Mountains meet the Music"

Visit Historic Downtown Paintsville  
History...Shopping...Dining...Antiquing



John Caldwell Calhoun Mayo came to Paintsville as a teacher but soon became aware of the region's potential in coal. He began buying mineral rights, eventually becoming Kentucky's wealthiest citizen. *The Mayo Mansion*, built in 1905-1912, is three stories with 43 rooms. Today the Mayo Mansion serves as Our Lady of the Mountains parochial school and can only be toured by appointment.



*The Mayo Methodist church*, across the street from the mansion, was also built by Mr. Mayo. It is renowned for the stained glass windows, lovely stone construction, and organ donated by Andrew Carnegie.



Paintsville Golf Course



Paintsville Lake  
Marina, Campground, Restaurant



606.297.1469

[www.VisitPaintsvilleKy.com](http://www.VisitPaintsvilleKy.com)